



Image 1: P 65+ Full resolution pixel quality (100%).

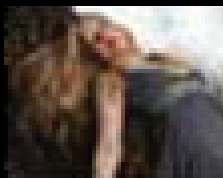


Image 2: Simple image scaling.



Image 3: P 65+ Sensor+ scaled pixel quality.

### Sensor+ technology (patent pending)

The P 65+ is the first digital back ever to feature the Sensor+ breakthrough innovation for unprecedented versatility in photography.

Sensor+ involves combining pixels on a CCD chip to create larger pixels for increased sensitivity and smaller files for faster workflow, while maintaining the full sensor area (no crop).

Sensor+ is unique by maintaining image quality while scaling. **Image 1** is a full resolution P 65+ capture at 100% pixel view. **Image 2** is an example of simple scaling with massive loss of quality. **Image 3** is an example of Sensor+ maintaining full image quality at 25% of the full resolution.

### No lens factor. No Crop. No mask.

With Sensor+ full frame captures you are ensured to get the full picture in every capture. In addition to the true wide angle performance, you have complete control of the composition with 100% use of the viewfinder in 645 cameras.

- P 65+ delivers full frame captures at both full resolution and Sensor+ capture mode.
- **Image 4:** Simple cropping is the alternative for multiple resolution options, resulting in lost control of composition and reduced wide angle.

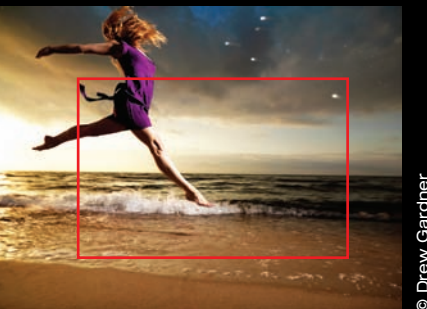


Image 4: Example of 35mm crop from 645 format (1:1).



**Phase One A/S**  
 Roskildevej 39  
 DK-2000 Frederiksberg  
 Denmark  
 Tel.: +45 36 46 01 11  
 Fax: +45 36 46 02 22  
 Email: info@phaseone.dk

**Phase One Asia**  
 Qing Hai Lu, 138, 25B  
 Jing An District  
 Shanghai 200041  
 China  
 Tel.: +86 21 63842854  
 Fax: +86 21 55217747  
 Email: lzm@phaseone.com

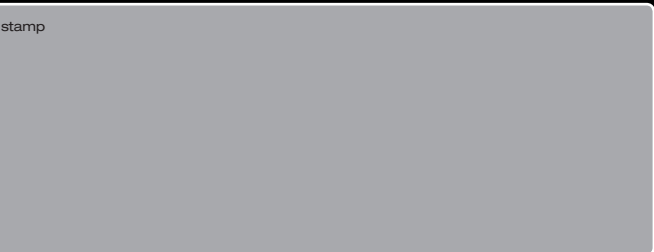
**Phase One Inc. - USA**  
 200 Broadhollow Road  
 (Suite 312)  
 Melville, NY 11747 - 0983  
 Tel.: +1 631 547 8900  
 Fax: +1 631 547 9898  
 Email: info@phaseone.com

**Phase One Japan**  
 #302,2-11-1 Nakano  
 Nakano-ku, Tokyo  
 Japan 164-0001  
 Tel.: +81 3 3229 0977  
 Fax: +81 3 3229 0987  
 Email: japan@phaseone.com

**Phase One Germany**  
 Oskar-Jäger-Str. 160  
 D-50825 Köln - Germany  
 Tel.: +49 (0)221 54 02 26 - 0  
 Fax: +49 (0)221 45 02 26 - 22  
 Email: info@phaseone.de

[www.phaseone.com](http://www.phaseone.com)  
 Phase One support: [www.phaseone.com/support](http://www.phaseone.com/support)

dealer stamp



# CAPTURE REDEFINED

## P 65+

### The world's most desirable digital back

Leading photographers back to the days of true wide angle, full view of the scene to be captured, while delivering unsurpassed level of details, the P 65+ connects the past with an inspiring future. Being the benchmark for reliability and image quality, the P 65+ ensures that you amaze your clients at every capture.

The P 65+ offers the world's first full frame 645 sensor, delivering astounding 60.5 mega pixel captures and giving you full advantage of your medium format lenses. Sensor+ technology marks another milestone offering ultimate flexibility with scalable pixels for higher sensitivity and faster workflow.

# PHASEONE

what the world's best photography is made of

# P 65<sup>+</sup>

## Full resolution capture mode

- Full frame 645 sensor for true wide angle
- Extraordinary details with 60.5 mega pixel resolution
- Full 645 viewfinder coverage for clear view of image composition and focus
- Extreme dynamic range of 12.5 f-stops
- ISO 50 – 800
- Up to 1 fps capture rate
- 20% larger sensor area than 39 and 50 mega pixels digital backs

# P 65<sup>+</sup>

## Sensor<sup>+</sup> capture mode

- Full frame image capture – no crop
- Smaller image files for faster workflow and reduced storage
- 12 x 12 micron pixel for higher sensitivity
- ISO 100 to 1600
- Smaller lossless files save storage: IIQ large 15MB, IIQ small 10 MB
- Upgradeable performance



## Specifications:

### Imaging technology

CCD: Full frame CCD  
Lens Factor: Full frame / 1.0  
Resolution: 60.5 mega pixels  
Active pixels: 8984 x 6732  
CCD size effective: 53.9 mm x 40.4 mm  
Pixel size: 6 x 6 micron  
Image ratio: 4 : 3  
Microlens on CCD: No  
Dynamic range: 12.5 f-stops

### P65<sup>+</sup> full resolution capture mode:

Resolution: 60.5 mega pixels  
Pixel size: 6 x 6 micron  
RAW file compression: IIQ large: 60 MB,  
IIQ small 40 MB  
ISO: 50, 100, 200, 400, 800

### Sensor<sup>+</sup> capture mode:

Resolution: 15 mega pixels  
Pixel size: 12 x 12 micron  
RAW file compression: IIQ large: 15 MB,  
IIQ small 10 MB  
ISO: 100, 200, 400, 800, 1600

### Output files

Color depth: 16 bit per color  
Image file formats: All output formats of Capture One are possible: TIFF-RGB, TIFF-CMYK, JPEG, RGB, Embedded ICC profile, CMYK

### Color management:

### Camera system

Capture time: 1.0 sec./ frame – 1.2sec/ frame depending on camera platform

### Storage security:

Phase One Secure Storage System technology

### Battery type:

7.2 V Lithium Ion 2500mAh  
2000 captures

### Exposure time:

1/10000 sec. – 1 minute

### Live preview:

Yes

### IR filter:

Mounted on CCD

### Cooling system:

Passive cooling

### Power up time:

Less than 2 sec. from OFF, sleeping architecture for instant ON

### Power:

8-33 V DC (from FireWire®)

### LCD screen

Size: 2.2"

Resolution: 230,400 pixels

Viewing angle: 160°

### P<sup>+</sup> back mounts

Phase One/Mamiya: Phase One 645 AF Mamiya 645AFD series, RZ67 Pro IID, Mamiya RB67es

Via adaptor: Mamiya RZ67 Pro IID

Phase One H101: Hasselblad H1 and H2

Hasselblad V: Hasselblad 555ELD, 533ELX, 503CW and 501CM

Contax 645: Contax 645 AFD

Hasselblad H: Hasselblad H1 and H2

Contax: Contax 645AF

### Technical cameras and wide angle 4 x 5" via Flexadaptor:

Arca Swiss, Cambo, Linhof, Toyo, Sinar, Plaubel, Horseman

### Operating conditions

Temperature: 0° to 40°C (32° to 122°F)

Humidity: 15 to 80% RH (non-condensing)

### Lighting

Supports all photographic lights:

Flash, tungsten, daylight, fluorescent, HMI

### Computer minimum requirements

Mac: Fast Core 2 Dual or later CPU. 4 GB RAM. Fast HDD: RAID 0 configured systems for max. performance. Nvidia 8800 series graphics card or newer.

PC/Mac: Pentium III, 1 GB RAM, IEEE 1394 interface, Windows XP/2000

### Software

Capture One 4.5

### Certifications

CE

### Storage files

Phase Ones IIQ RAW file format speeds up the image capture and file transfer. Increases the storage capacity by turning the full 16 bit image data into a compact RAW file format. The default IIQ RAW-large format is completely lossless.