



© Alexander Flemming

Blue Ring

Prime Lenses

PHASE**ONE**
what the world's best photography is made of

Medium Format Optics

Quality, design and performance

The Blue Ring lens range is designed together with world-renowned optics manufacturer Schneider Kreuznach of Germany, and builds on more than a century of experience in high-resolution optics, which now supports resolution well beyond 100MP.

The Blue Ring lenses represent a new standard in optical performance and introduce a higher level of manufacturing excellence, more precise quality assurance and tighter tolerances than ever before. Schneider Kreuznach lenses have been the natural choice of the world's most demanding professional photographers for decades, and the Blue Ring range reaffirms their position as second to none.

- Industrial grade build quality
- Extended integration with the XF
- Precision metal barrel

PHASEONE

what the world's best photography is made of





Fashion & Beauty Products Portrait Food Landscape & Wildlife Automotive Architecture & Interior Creative Still Life Action & Sports Events & Weddings Journalism & Documentary Cultural Heritage (Repro Forensic)

Serving the world's most demanding photographers

The Schneider Kreuznach Blue Ring lens range has grown over time to become the widest and most versatile range in medium format photography.

The lens range is designed to meet the photographic requirements within virtually all professional applications and to help photographers realize their creative vision.

Copyright ©
 Alberto G. Puras, Nicklas Bågvinge, Rory Lewis, Howard Shooter, Peter Eastway, Richard Thompson,
 Drew J. Altdorffer, Alexander Flemming, William Barrington Binns, Kamil Tamiola, Jens Honore, Morgan Library

XF Camera System Integration

Camera - Digital Back - Viewfinders - Imaging Software

The XF Camera System captures the analog optical input from the Blue Ring lenses, and through seamless integration with the Capture One Pro software, the RAW image files can be refined into creative perfection.



XF Camera Body

- Fast focal plane shutter up to 1/4000s
- Precision autofocus with dedicated focus sensor
- Built-in seismograph for vibration free capture
- Programmable sequence machine for focus stacking or HDR
- Autofocus trim (Individually stored for each Blue Ring lens)



Digital Back

- Live View with zoom function and direct capture control
- Exposure warning and clip warning on images
- Focus mask on images
- Touch screen and 4-button system for browsing, zooming and panning



Viewfinder

- Full frame light-intensive prism viewfinder
- Info display with camera info, focus indicator and light metering
- Collapsible waist-level viewfinder with light measuring and focus indication



Capture One Pro

- Industry benchmark for image quality
- Ultimate tethered/untethered workflow
- Live View with focusing control and camera control
- Automated lens correction with a wide array of creative imaging tools

Medium Format

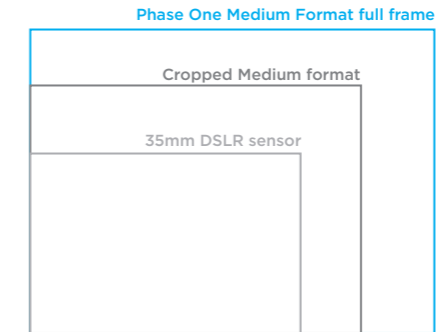
Bigger is better

High resolution is only one of several advantages of full frame medium format. Phase One Medium Format delivers a more shallow depth of field, better tonality and much more creative freedom than medium format systems with smaller sensors.



Sensor Size

The Phase One full frame 100MP medium format sensors are 2.5 times larger than those found in high-end 35mm DSLR and 1.5 times larger than the cropped size medium format 50MP sensors.



1.5
TIMES LARGER
THAN CROPPED MF

2.5
TIMES LARGER
THAN DSLR

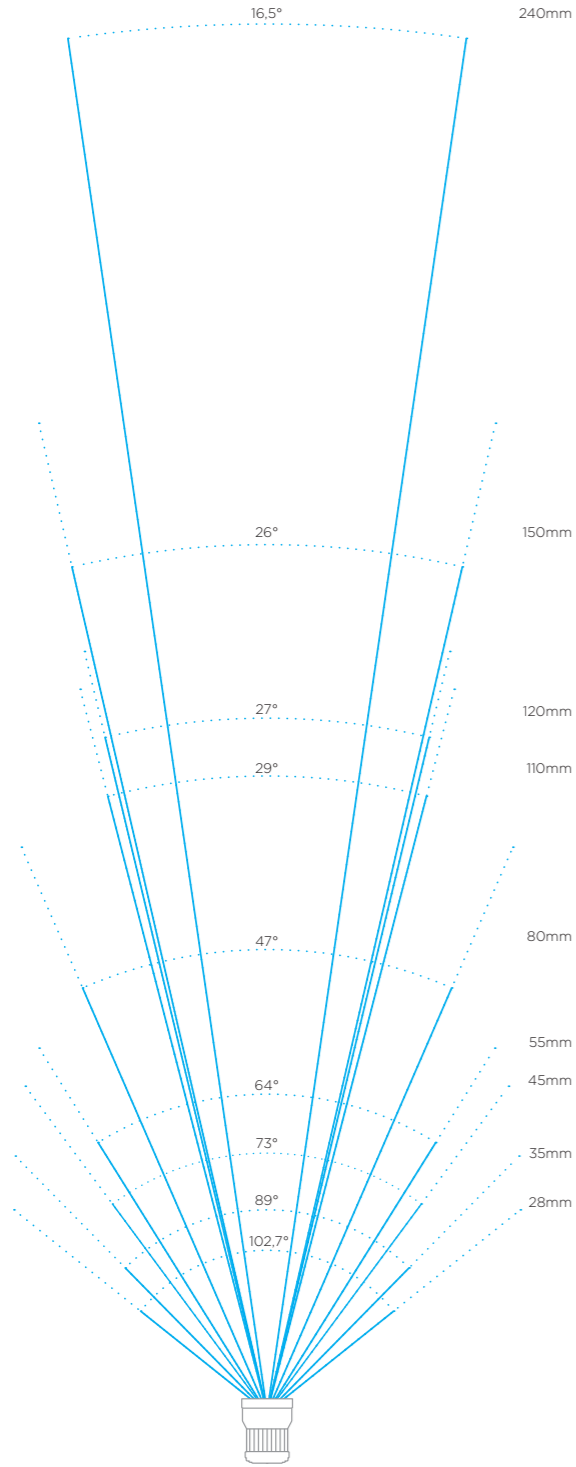
1:1 Sensor size

- 53.4mm x 40.1mm
- 44mm x 33mm
- 36mm x 24mm

Captivating Field of View

From wide angle to tele

Framing is essential for getting the right shot. Whether it is wide perspective or zoomed in on detail, the Schneider Kreuznach Blue Ring range has a lens that fits your needs.



RAW sample images available on USB key

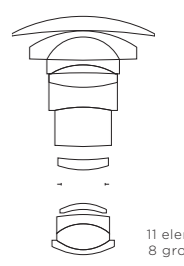


© Niels V. Knudsen
The Image Quality Professor



Schneider Kreuznach

35mm LS f/3.5



11 elements
8 groups



“The new 35mm presents me with unparalleled optical clarity down to the edge of the frame. For wide angle applications, this is the only lens I'd consider!”

- Richard Thompson

Specifications

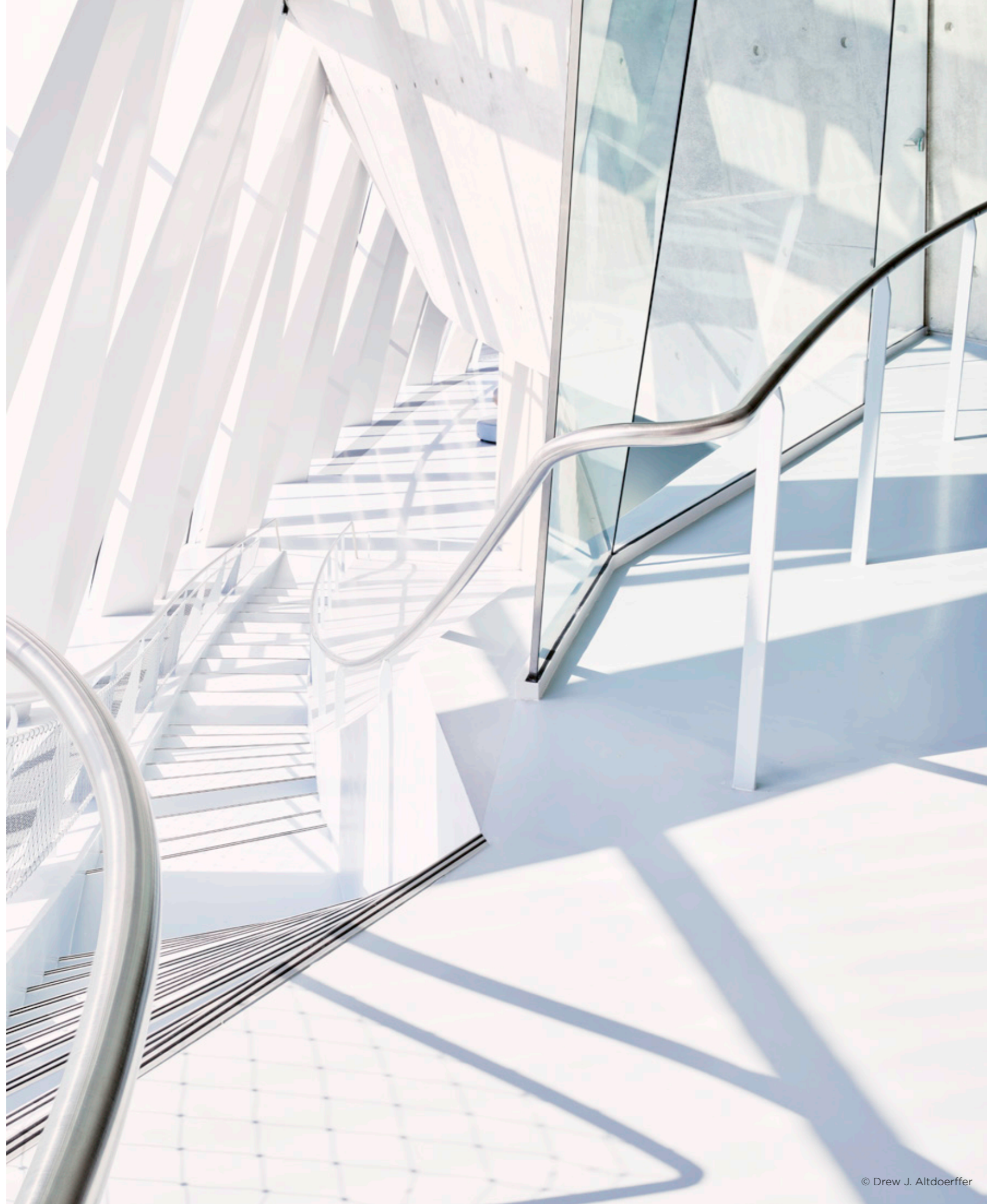
Aperture range	f/3.5 - f/32
Angle of view	89°
Focusing system	Auto Focus / Manual
Filter	105mm
Optical construction	11 elements, 8 groups
Lens hood	Bayonet
Flash sync	Up to 1/1600
LS shutter speed max.	1/1600s
XF FPS shutter speed max.	1/4000s
Weight	1370g / 3.02lb
Equivalent to 35mm	22mm

Focus range

Min. focus distance	50cm / 1.64ft
Maximum magnification ratio	0.104x
Area covered (WxH)	518mm x 390mm 20.4" x 15.3"

Compatibility

Mount	XF 645 Bayonet
Supported systems	XF Camera System, 645 DF/DF*
2x Teleconverter	no

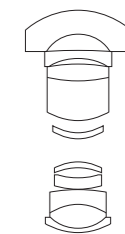


“Precision is everything with architectural photography. The quality of the tools you use are directly visible in the work you produce and the results of the XF IQ3 100MP and Blue Ring 45mm Schneider Kreuznach lens speak for themselves.”

- Drew J. Altdoerffer

Schneider Kreuznach

45mm LS f/3.5



10 elements
7 groups

Specifications

Aperture range	f/3.5 - f/32
Angle of view	48°
Focusing system	Auto Focus / Manual
Filter	95mm
Optical construction	10 elements, 7 groups
Lens hood	Bayonet
Flash sync	Up to 1/1600
LS shutter speed max.	1/1600s
XF FPS shutter speed max.	1/4000s
Weight	1.220g / 2.68lb
Equivalent to 35mm	28mm

Focus range

Min. focus distance	55cm / 1.8ft
Maximum magnification ratio	0.116x
Area covered (WxH)	465mm x 349mm 18.3" x 13.7"

Compatibility

Mount	XF 645 Bayonet
Supported systems	XF Camera System, 645 DF/DF*
2x Teleconverter	no



“The autofocus with this lens on an XF Camera System is so fast and incredibly accurate, so despite the extensive resolution, I need not to worry”

- William Barrington Binns

© William Barrington Binns

Schneider Kreuznach

55mm LS f/2.8



7 elements
6 groups

Specifications

Aperture range	f/2.8 - f/32
Angle of view	64°
Focusing system	Auto Focus / Manual
Filter	72mm
Optical construction	7 elements, 6 groups
Lens hood	Bayonet
Flash sync	Up to 1/1600
LS shutter speed max.	1/1600s
XF FPS shutter speed max.	1/4000s
Weight	600g / 1.3lb
Equivalent to 35mm	34mm

Focus range

Min. focus distance	45cm / 1.47ft
Maximum magnification ratio	0.18x
Area covered (WxH)	310mm x 230mm 12.2" x 9"

Compatibility

Mount	XF 645 Bayonet
Supported systems	XF Camera System, 645 DF/DF*
2x Teleconverter	no

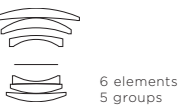
"The Schneider 80 mm LS is a powerful and versatile lens. It is perhaps the most useful in my work, as it offers me freedom of movement and natural framings. It's light and of very high optical quality. Always in my suitcase."

- Alberto G. Puras



Schneider Kreuznach

80mm LS f/2.8



6 elements
5 groups

Specifications

Aperture range	f/2.8 - f/32
Angle of view	47°
Focusing system	Auto Focus / Manual
Filter	72mm
Optical construction	6 elements, 5 groups
Lens hood	Bayonet
Flash sync	Up to 1/1600
LS shutter speed max.	1/1600s
XF FPS shutter speed max.	1/4000s
Weight	500g / 1.10lb
Equivalent to 35mm	50mm

Focus range

Min. focus distance	70cm / 2.30ft
Maximum magnification ratio	0.15x
Area covered (WxH)	279mm x 377mm 11" x 14.8"

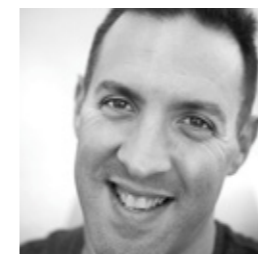
Compatibility

Mount	XF 645 Bayonet
Supported systems	XF Camera System, 645 DF/DF*
2x Teleconverter	no



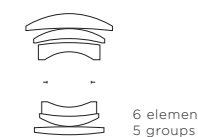
Schneider Kreuznach

110mm LS f/2.8



“The 110mm LS lens is a serious piece of lens construction. Professional food photography requires the best of the best in sharpness and colour, and the Schneider lenses always deliver.”

- Howard Shooter



6 elements
5 groups

Specifications

Aperture range	f/2.8 - f/22
Angle of view	29°
Focusing system	Auto Focus / Manual
Filter	72mm
Optical construction	6 elements, 5 groups
Lens hood	Bayonet
Flash sync	Up to 1/1600
LS shutter speed max.	1/1600s
XF FPS shutter speed max.	1/4000s
Weight	635g / 1.40lb
Equivalent to 35mm	68mm

Focus range

Min. focus distance	90cm / 2.90ft
Maximum magnification ratio	0.16x
Area covered (WxH)	310mm x 230mm 12.2" x 9"

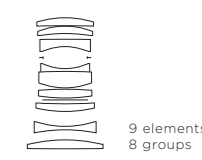
Compatibility

Mount	XF 645 Bayonet
Supported systems	XF Camera System, 645 DF/DF*
2x Teleconverter	no

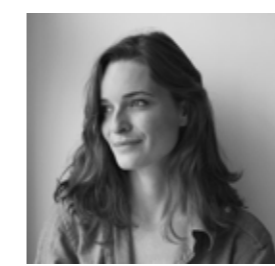


Schneider Kreuznach

120mm LS f/4 Macro



9 elements
8 groups



“The 120mm Blue Ring lens makes for a fantastic portraits lens. The results are unbelievably sharp and the versatility of the close focusing distance means I can capture the intimate, beautiful details in astounding quality.”

- Andrea Zvadova

Specifications

Aperture range	f/4 - f/32
Angle of view	33°
Focusing system	Auto Focus / Manual
Filter	86mm
Optical construction	9 elements, 8 groups
Lens hood	Bayonet Metal Hood
Flash sync	Up to 1/1600
LS shutter speed max.	1/1600s
XF FPS shutter speed max.	1/4000s
Weight	960g / 2.12lb
Equivalent to 35mm	75mm

Focus range

Min. focus distance	37cm / 1.21ft
Maximum magnification ratio	1.00x
Area covered (WxH)	56mm x 42mm 2.2" x 1.6"

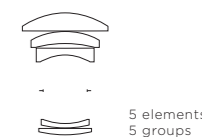
Compatibility

Mount	XF 645 Bayonet
Supported systems	XF Camera System, 645 DF/DF*
2x Teleconverter	no



Schneider Kreuznach

150mm LS f/3.5



5 elements
5 groups

Specifications

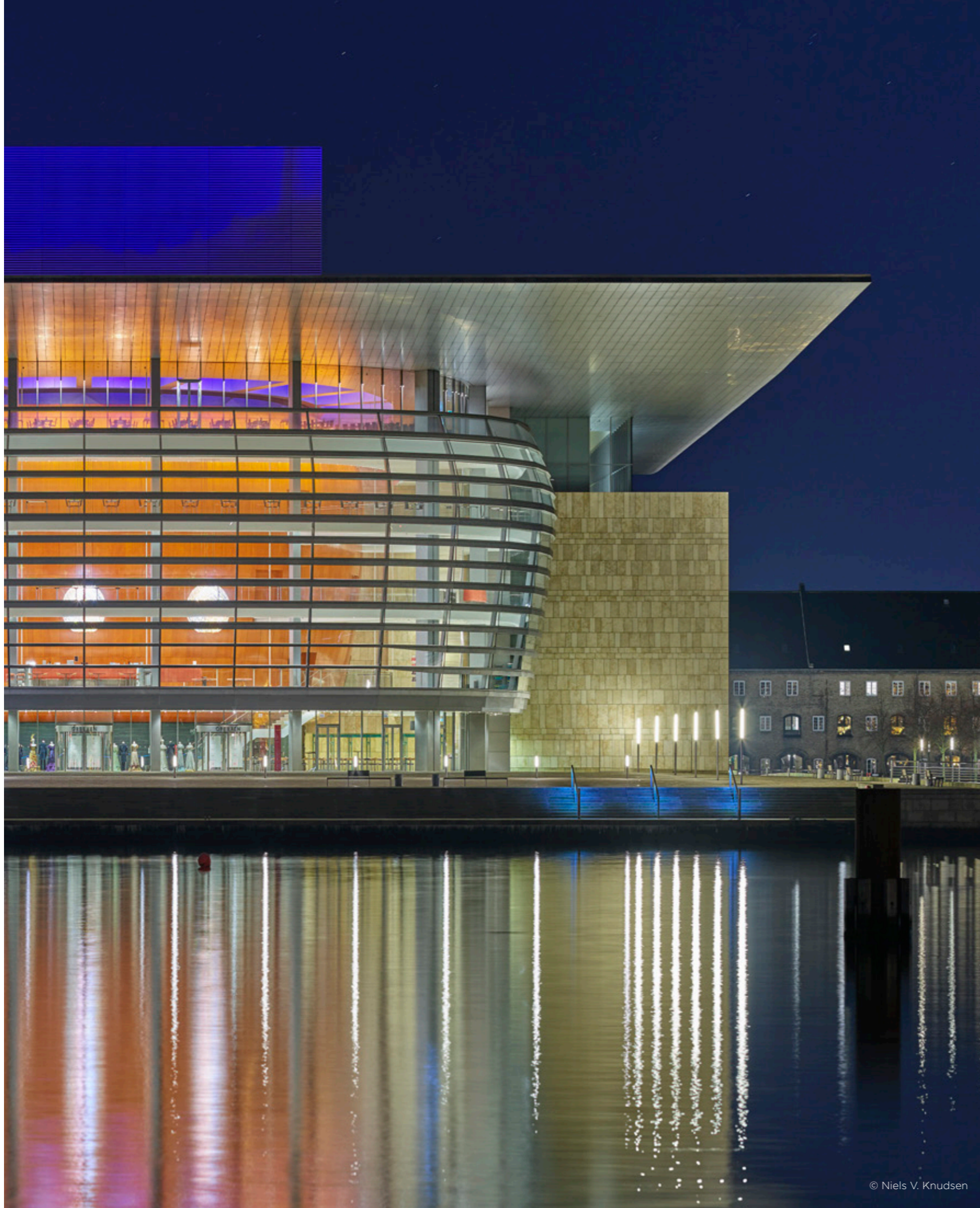
Aperture range	f/3.5 - f/32
Angle of view	26°
Focusing system	Auto Focus / Manual
Filter	72mm
Optical construction	5 elements, 5 groups
Lens hood	Bayonet Metal Hood
Flash sync	Up to 1/1600
LS shutter speed max.	1/1600s
XF FPS shutter speed max.	1/4000s
Weight	645g / 1.42lb
Equivalent to 35mm	94mm

Focus range

Min. focus distance	150cm / 4.92ft
Maximum magnification ratio	0.12x
Area covered (WxH)	461mm x 3410mm 18.1" x 13.4"

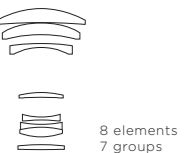
Compatibility

Mount	XF 645 Bayonet
Supported systems	XF Camera System, 645 DF/DF*
2x Teleconverter	yes



Schneider Kreuznach

150mm LS f/2.8



“The 150mm f/2.8 lens is the most versatile lens I’ve ever used. For portraits, it has beautiful out-of-focus blur, and for landscape or architecture images, it’s sharp corner to corner. It’s a lens so good that it hardly needs any digital correction.”

- Niels V. Knudsen

Specifications

Aperture range	f/2.8 - f/22
Angle of view	25°
Focusing system	Auto Focus / Manual
Filter	95mm
Optical construction	8 elements, 7 groups
Lens hood	Bayonet Metal Hood
Flash sync	Up to 1/1000
LS shutter speed max.	1/1000s
XF FPS shutter speed max.	1/4000s
Weight	645g / 1.42lb
Equivalent to 35mm	94mm

Focus range

Min. focus distance	100cm / 3.28ft
Maximum magnification ratio	0.192x
Area covered (WxH)	280mm x 210mm 11" x 8.3"

Compatibility

Mount	XF 645 Bayonet
Supported systems	XF Camera System, 645 DF/DF*
2x Teleconverter	yes



© Peter Eastway



“The new XF body has transformed the 240mm into an incredibly functional lens - this is edge-to-edge perfection on a 100MP sensor and taken without a tripod!”

- Peter Eastway

Schneider Kreuznach

240mm LS f/4.5



8 elements
8 groups

Specifications

Aperture range	f/4.5 - f/22
Angle of view	16,5°
Focusing system	Auto Focus / Manual
Filter	86mm
Optical construction	8 elements, 8 groups
Lens hood	Bayonet
Flash sync	Up to 1/1000
LS shutter speed max.	1/1000s
XF FPS shutter speed max.	1/4000s
Weight	1600g / 3.53lb
Equivalent to 35mm	150mm

Focus range

Min. focus distance	170cm / 5.58ft
Maximum magnification ratio	0.17x
Area covered (WxH)	518mm x 390mm 20.4" x 15.3"

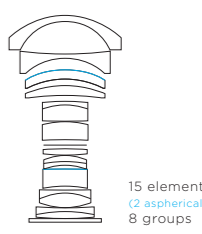
Compatibility

Mount	XF 645 Bayonet
Supported systems	XF Camera System, 645 DF/DF*
2x Teleconverter	yes



Schneider Kreuznach

40-80mm LS f/4 Aspherical



15 elements
(2 aspherical)
8 groups

"The 40-80 lens offers an outstanding colour rendition and pixel-to-pixel sharpness, consistently throughout the whole focal range, all in a durable and battle-tested package."

- Kamil Tamiola

Specifications

Aperture range	Wide: f/4 - f/32 Tele: f/5.6 - f/45
Angle of view	Wide: 82° - Tele: 47°
Focusing system	Auto Focus / Manual
Filter	105mm
Optical construction	15 elements (2 aspherical) 8 groups
Lens hood	Bayonet
Flash sync	Up to 1/1600
LS shutter speed max.	1/1600s
XF FPS shutter speed max.	1/4000s
Weight	1600g / 3.53lb
Equivalent to 35mm	Wide: 25mm, Tele: 50mm

Focus range

Min. focus distance	60cm / 1.97ft
Maximum magnification ratio	Wide: 0.094x - Tele: 0.179x
Area covered (WxH)	Wide: 560mm x 420mm Tele: 300mm x 230mm

Compatibility

Mount	XF 645 Bayonet
Supported systems	XF Camera System, 645 DF/DF*
2x Teleconverter	no



© Douglas Sonders

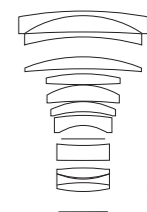


“This is my favorite and most versatile lens in my camera bag. It has the true sharpness of a prime lens, but the convenience of a leaf shutter zoom lens. I have used it to shoot some of the biggest ad campaigns and magazine covers of my career.”

- Douglas Sonders

Schneider Kreuznach

75-150mm LS f/4.0-5.6



11 elements
10 groups

Specifications

Aperture range	Wide: f/4 - f/32 Tele: f/5.6 - f/45
Angle of view	Wide: 50° - Tele: 26°
Focusing system	Auto Focus / Manual
Filter	95mm
Optical construction	11 elements, 10 groups
Lens hood	Bayonet
Flash sync	Up to 1/1600
LS shutter speed max.	1/1600s
XF FPS shutter speed max.	1/4000s
Weight	1800g / 3.96lb
Equivalent to 35mm	Wide: 47mm - Tele: 93mm

Focus range

Min. focus distance	100cm / 3.28ft
Maximum magnification ratio	Wide: 0.09x - Tele: 0.164x
Area covered (WxH)	Wide: 636mm x 472mm Tele: 341mm x 253mm

Compatibility

Mount	XF 645 Bayonet
Supported systems	XF Camera System, 645 DF/DF*
2x Teleconverter	no



Specifications	28mm LS f/4.5	35mm LS f/3.5	45mm LS f/3.5	55mm LS f/2.8	80mm LS f/2.8	110mm LS f/2.8
Aperture range	f/4.5 - f/32	f/3.5 - f/32	f/3.5 - f/32	f/2.8 - f/22	f/2.8 - f/22	f/2.8 - f/22
Angle of view	102.7°	89°	73°	64°	47°	29°
Focusing system	Auto Focus / Manual	Auto Focus / Manual	Auto Focus / Manual	Auto Focus / Manual	Auto Focus / Manual	Auto Focus / Manual
Filter	Rear sheet filter	105mm	95mm	72mm	72mm	72mm
Optical construction	14 elements 10 groups	11 elements 8 groups	10 elements 7 groups	7 elements 6 groups	6 elements 5 groups	6 elements 5 groups
Lens hood	Bayonet "tulip"	Bayonet "tulip"	Bayonet "tulip"	Bayonet	Bayonet	Bayonet
Flash sync (using LS)	Up to 1/1600	Up to 1/1600	Up to 1/1600	Up to 1/1600	Up to 1/1600	Up to 1/1600
Shutter speed max (using FPS)	1/4000	1/4000	1/4000	1/4000	1/4000	1/4000
Dimensions (L x W)	90mm x 136mm 3.5" x 5.5"	111mm x 119mm 4.4" x 4.7"	101 x 122.9mm 4.0 x 4.8"	77.6mm x 86.5mm 3" x 3.4"	64.4mm x 86.5mm 2.5" x 3.4"	83.3mm x 86.5mm 3.2" x 3.4"
Weight	1100g 2.43lb	1370g 3.02lb	1220g 2.68lb	600g 1.3lb	500g 1.10lb	635g 1.40lb
Equivalent to 35 mm	17mm	22mm	28mm	34mm	50mm	68mm

Focus Range

Min. focus distance	35cm / 1.15ft	50cm / 1.64ft	55cm / 1.8ft	45cm / 1.47ft	70cm / 2.30ft.	90cm / 2.90ft.
Maximum magnification ratio	0.15x	0.104x	0.116x	0.18x	0.15x	0.16x
Area covered (WxH)	372mm x 276mm 14.6" x 10.9"	518mm x 390mm 20.4" x 15.3"	465mm x 349mm 18.3" x 13.7"	310mm x 230mm 12.2" x 9"	279mm x 377mm 11" x 14.8"	310mm x 230mm 12.2" x 9"

Compatibility

Mount	XF 645 Bayonet	XF 645 Bayonet	XF 645 Bayonet	XF 645 Bayonet	XF 645 Bayonet	XF 645 Bayonet
Supported systems	XF Camera System P1 & M 645DF/DF+	XF Camera System P1 & M 645DF/DF+	XF Camera System P1 & M 645DF/DF+	XF Camera System P1 & M 645DF/DF+	XF Camera System P1 & M 645DF/DF+	XF Camera System P1 & M 645DF/DF+
2x Teleconverter	no	no	no	no	no	no



Specifications	120mm LS f/4	150mm LS f/2.8	150mm LS f/3.5	240mm LS f/4.5	40-80mm LS f/4	75-150mm LS f/4	120mm TS F/5.6
Aperture range	f/4 - f/32	f/2.8 - f/22	f/3.5 - f/32	f/4.5 - f/22	Wide: f/4 - f/32 Tele: f/5.6 - f/45	Wide: f/4 - f/32 Tele: f/5.6 - f/45	f/5.6 - f/22
Angle of view	27°	25°	26°	16.5°	Wide: 82° Tele: 47°	Wide: 50° Tele: 26°	8° tilt / 12mm shift 360° on two axes
Focusing system	Auto Focus / Manual	Auto Focus / Manual	Auto Focus / Manual	Auto Focus / Manual	Auto Focus / Manual	Auto Focus / Manual	Manual Focus
Filter	86mm	95mm	72mm	86mm	105mm	95mm	Bayonet VIII (ø 104mm)
Optical construction	9 elements 8 groups	8 elements 7 groups	5 elements 5 groups	8 elements 8 groups	15 elements 11 groups	11 elements 10 groups	6 elements 4 groups
Lens hood	Bayonet	Bayonet	Bayonet	Bayonet	Bayonet "tulip"	Bayonet "tulip"	N/A
Flash sync (using LS)	Up to 1/1600	Up to 1/1000	Up to 1/1600	Up to 1/1000	Up to 1/1600	Up to 1/1600	1/125
Shutter speed max (using FPS)	1/4000	1/4000	1/4000	1/4000	1/4000	1/4000	1/4000
Dimensions (L x W)	51.5mm x 80.5mm 2" x 3.2"	115mm x 141.6mm 4.5" x 5.6"	87.1mm x 86.5mm 3.4" x 3.4"	169mm x 104.5mm 6.7" x 4.1"	105mm x 111mm 5.9" x 4.4"	172mm x 105.5mm 6.8" x 4.2"	135mm x 106mm 5.31" x 4.17"
Weight	960g 2.12lb	1658g 3.65lb	645g 1.42lb	1600g 3.53lb	1850g 4.08lb	1800g 3.96 lb	1038g 2.28lb
Equivalent to 35 mm	75mm	93mm	94mm	150mm	Wide: 25mm Tele: 50mm	Wide: 47mm Tele: 93mm	75mm
Min. focus distance	0.37m / 1.21 ft.	100cm / 3.28ft.	150cm / 4.92ft.	170cm / 5.58ft.	60cm / 1.97ft.	100cm / 3.28ft.	840cm
Maximum magnification ratio	1.00x	0.192x	0.12x	0.17x	Wide: 0.094x Tele: 0.179x	Wide: 0.09x Tele: 0.164x	0.16x
Area covered (WxH)	56mm x 42mm 2.2" x 1.6"	280mm x 210mm 11" x 8.3"	461mm x 341mm 18.1" x 13.4"	327mm x 242mm 12.9" x 9.5"	W) 56 x 42cm 22" x 16.5" T) 30 x 23cm 11.8" x 9"	W) 636mm x 472mm 25" x 18.6" T) 341mm x 253mm 13.4" x 10.0"	45mm x 60mm
Mount	XF 645 Bayonet	XF 645 Bayonet	XF 645 Bayonet	XF 645 Bayonet	XF 645 Bayonet	XF 645 Bayonet	XF 645 Bayonet
Supported systems	XF Camera System P1 & M 645DF/DF+	XF Camera System P1 & M 645DF/DF+	XF Camera System P1 & M 645DF/DF+	XF Camera System P1 & M 645DF/DF+	XF Camera System P1 & M 645DF/DF+	XF Camera System P1 & M 645DF/DF+	XF Camera System P1 & M 645DF/DF+
2x Teleconverter	no	no	yes	yes	no	no	no

Phase One

High Resolution Optics



PHASE**ONE**
what the world's best photography is made of